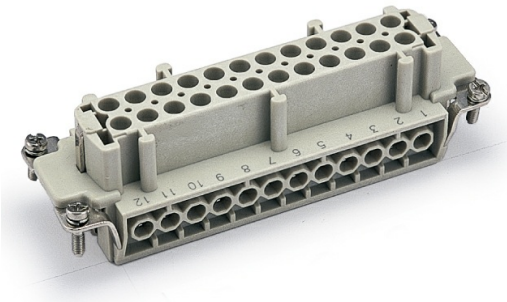


HE-024-F - Insert

122 024 021 0001
<https://www.wainelectric.com/he-024-f>



Connection type:Screw connection, Male/female:Female, Specifications:24B|48B, Number of connector contacts:24, Rated current:16A, Rated voltage:500V, Wire gauge (mm²):0.75-2.5mm², Wire gauge (AWG):18-14 AWG

Technical Data

Series	HE insert series
Connection type	Screw connection
Male/female	Female
Specifications	24B 48B
Number of connector contacts	24
Grounding contacts	Yes
Rated current	16A
Rated voltage	500V
Rated pulse voltage	6KV
Class of pollution	3
Parameters when class of pollution is 2	16A 400/690V 6KV 2
Rated voltage as per UL/CSA	600V
Insulation resistance	≥10 ¹⁰ Ω
Working temperature	-40°C...+125°C
Mating cycles	≥500
Inserts material	Polycarbonate
Inserts color	RAL 7032 (light gray)
Flame retardant rating as per UL94	V0
Contact material	Copper alloy
Surface treatment	Silver-plated
Contact resistance	≤1mΩ
Wire gauge (mm²)	0.75-2.5mm²
Wire gauge (AWG)	18-14 AWG

HE-024-F - Insert

122 024 021 0001

<https://www.wainelectric.com/he-024-f>



Tightening/testing torque	0.5Nm
Stripping length	7mm
Standard	DIN EN 60 664 DIN EN 61984